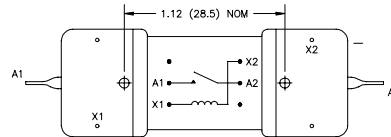
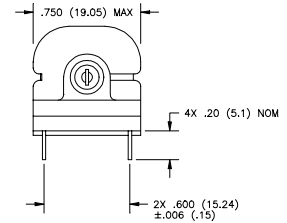
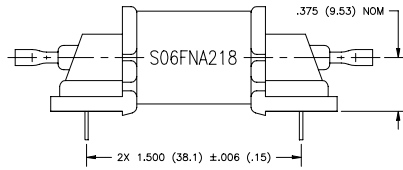
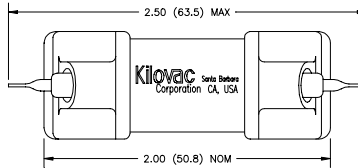


**Kilovac S06FNA218 No Load Switching**

**Features:**

- 8 amp carry at DC; 6 amp carry at 30 MHz
- Vacuum dielectric for low leakage current applications
- Highly reliable RF relay
- 100 million cycle mechanical life



1. Dimensions in parentheses are in millimeters.
2. Pin dimension are .024 (.61) nom. square.
3. Recommended P.C.B. holes: .043 (1.0)
4. RF screens are not included.

PRODUCT SPECIFICATIONS		
Part Number	Units	S06FNA218
Contact Arrangement .....		SPST-NO
Contact Form .....		A
Voltage Ratings .....	kV Peaks	
Between Contacts .....		5
Contacts to Coil .....		5
Contacts to Screen .....		N/A
Coil to Screen .....		N/A
Carry Current , Maximum .....	Amps	
@ DC .....		8
@ 30 MHz .....		6
Contact Resistance .....	Ohms	0.050
Contact Capacitance .....	pF	
Between Open Contacts .....		0.6
Closed Contacts to Ground .....		4
Operate Time [5] .....	ms	3
Release Time [5] .....	ms	1
Shock, 11 ms 1/2 Sine (Peak) .....	G's	100
Vibration .....	G's Peak	20
.....	Hz	10 to 500
Temperature Range .....	°C	
Operating .....		-40 to +85
Storage .....		-55 to +125
Initial Insulation Resistance .....	GigaOhms	10
Mechanical Life .....	Cycles	100 Million
Weight, Nominal .....	oz.	0.85

COIL DATA		
	S06FNA218	Unit
Volts, Nominal	12	Vdc
Maximum Voltage	15	
Pickup, Maximum	8	
Dropout, Maximum	2	
Coil Resistance	480	Ohms,
RF Screen, Inner	N/A	Pin #
RF Screen, Outer	N/A	
EM Shield	N/A	

5. Operate and release times are with external diode suppression, @ 25°C.