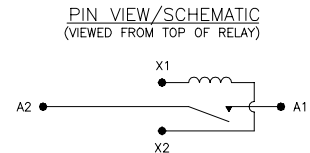
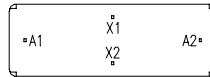
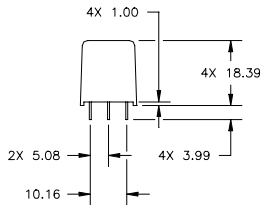
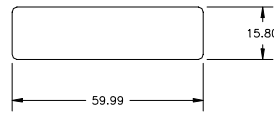
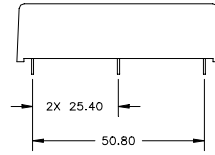
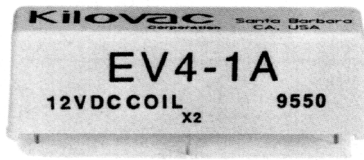


Kilovac EV4-1A Make Only



Features:

- Excellent for electric vehicle controller main capacitor pre-charge, (make & carry) applications
- PCB mounting
- Rugged design for the most demanding applications, including seismic shock
- Small size and weight
- Low power consumption
- No heat sinks required
- SF-6 gas-filled & sealed; can operate in explosive and harsh environments
- 1000V isolation across open contacts
- 320 Vdc, 4 amp make/carry

1. Overall dimensions are in maximums.
2. Pin dimension tolerances are as follows:
Lengths: +/- 1.0
Spacing: +/- .15
3. Pins are .63 square

Note: Dimensions in inches. Multiply values by 25.4 for dimensions in mm.

PRODUCT SPECIFICATIONS		
Part Number	UNIT	EV4-1A
Contact Arrangement		SPST-NO
Contact Form		A
Rated Resistive Load @ 320 Vdc ⁽²⁾	A	4
Continuous Current Carry, Max. @ 85°C	A	4
Load Polarity		Bi-Directional
Life, (Mechanical)		1 x 10 ⁹
Make/Carry Life for Resistive Loads ⁽¹⁾	cycles	10,000
Contact Resistance, Max., end of life	ohms	0.1
Dielectric at Sea Level (leakage less than 10 mA)		
Power Terminals to Coil & all other points	Vrms	1,000
Shock, 11ms 1/2 Sine (operating)	G's	100
Vibration, Sinusoidal (55-500 Hz, peak)	G's peak	20
Operating Ambient Temperature Range	°C	-40 to +85
Operate Time, Max., including Bounce @ 25°C	ms	2
Release Time, Max., including Bounce @ 25°C	ms	2
Insulation Resistance @ 500 Vdc, Min.	Mohm	100
Weight, Nominal	g (oz)	28 (1)

(1) Resistive load includes inductance load = 25 µH
(2) Conductor: Copper .52mm² (Awg 20)

COIL DATA		
Nominal, Volts dc	12	Unit
Maximum Coil Voltage	5	Vdc
Pickup, Max. @ 85°C	9	
Hold, Min. @ 85°C	5	
Drop-Out, Min. @ -40°C	2	
Coil Resistance (±10%)	150	Ohms